



# HQ SERIES

User Manual



# Dear Customers,

Thanks for purchasing the **TACTICAL OVERLAND TRAILER**. Our goal is to provide a camper that is always ready to go so that you can spend more time camping and less time packing. Trailers with very short setup time that can carry all your gear for a weekend adventure or an entire year-long expedition.

*For Any query please feel free to contact us.*

## CONTENTS

**03** 1. Introduction

---

**03** 2. Set-up Guide

---

**04** 3. Electrical System

---

**06** 4. Propane System

---

**08** 5. Shower Box

---

**08** 6. Kitchen Layout

---

**09** 7. Winterizing

---

**11** 8. General Maintenance

---

**12** 9. Warranty

---

## 1. INTRODUCTION:

**Tactical Overland** campers are compact overland camping trailers built with end-to-end capabilities, strong and light enough to follow you wherever you dare to go. The **Tactical Overland trailer** is versatile and designed for modern adventurers. It is Compact yet spacious to offer a comfortable living experience. With a well-equipped kitchen, cosy sleeping quarters, and a functional bathroom, it's perfect for travel enthusiasts. The trailer features smart storage solutions, maximizing space efficiency. Its sturdy construction ensures durability and safety during your journeys. Enjoy natural light through large windows and stay cool with efficient ventilation. It is suitable for camping, road-tripping, or exploring off-grid destinations due to its efficiency, convenience, and comfort.

## 2. SET-UP GUIDE:

### 2.1. Required Items

Before attempting to set up the Tow Trailer, gather the tools and items required to prevent any inconvenience:

- ✓ 2" hitch ball and a suitable ball mount for your vehicle (for Standard Coupler).
- ✓ Ball mount with a 1" hole designed for your vehicle (for Max Coupler).
- ✓ Tow vehicle equipped with 7-pin wiring and a brake controller.
- ✓ Trailer license plate and registration (or a trailer transport permit if required).
- ✓ Some vehicles may necessitate a 7-pin extension.
- ✓ 1 7/16" combination wrench or a crescent-style wrench with jaws capable of opening to 1 1/2", used to secure the nut on the bottom of the ball or CU Offroad coupler.
- ✓ 1/2" drive ratchet handle or breaker bar.
- ✓ 3/4" 6-point hex socket, 1/2" drive, OR 1 1/2" Socket, 1/2" drive (for attaching the CU Offroad Coupler to the ball mount).

### 2.2. Trailer Towing Setup Procedure

1. Getting Started by installing the License Plate.
2. Prepare the hitch of the Tow Vehicle.
3. Set the Hitch height at 21" or 25" depending on primary tow vehicle.
4. **For Regular Coupler:** Install a 2" hitch ball onto the tow vehicle's hitch.
5. **For Max Coupler:** Attach the supplied yoke to the tow vehicle's ball mount.
6. Attach the Safety Chains and secure the Breakaway Cable.
7. Plug in the 7-pin Trailer Cable to Tow the Vehicle.
8. Check and inspect the functioning of the Trailer Lights and Brakes to ensure they respond as expected.
9. Inspect the Brake Controller, Trailer Brakes, and Breakaway System.
10. Verify the correct operation of the brake controller and the trailer brakes, and ensure the breakaway system is functional.

### 3. ELECTRICAL SYSTEM:

The primary function of a circuit breaker is to safeguard an electrical circuit (the wiring) from potential damage caused by an overflow of current. Excessive current flow might result from an overload (due to numerous appliances or those with high power consumption), malfunctioning appliances, or short circuits. If a breaker has tripped, it is crucial to identify the source of the issue before resetting it. Always use a 30 amp rated extension cord, with a proper ground to minimize higher resistance or lack of ground.

#### 3.1. Main control Panel



#### 3.2. Control Panel Setup with Heater



#### 3.3. HQ Main Electrical Panel



#### 3.4. Open 30amp fuse spot for optional Heater



#### 3.5. Fuse Diagram

AC CIRCUITS	DC CIRCUITS	
MAIN 30 AMP Shore Line		30 AMP
	Control Panel	20 AMP
15 AMP Connector	Fridge	20 AMP
15 AMP Plug	Shower Box	20 AMP
	Fan	20 AMP
	Smoke Detector	20 AMP



### 3.6. Battery

The HQ Series trailer features a stock Canadian Energy battery, each unit includes the G24 DC model. This battery features a 77Ah power capacity. Lead acid batteries should ideally not be discharged below 50%.

**Dual Battery Option:** We offer a dual battery option of 2 x G24 to increase capacity. Please speak with your rep about this option.

**Lithium Battery Option:** Tactical Overland also has partnered with Renogy to offer the 100Ah self-heating Lithium battery with these lithium batteries, the system's overall capacity increases to approximately 200 Ah, as these cells can be fully utilized.



**Note:** Setting up the optional Renogy batteries requires a Bluetooth-enabled phone or tablet along with the Renogy app. One of the batteries must be designated as the master, and upon installation, the batteries are linked together, appearing as a single 200 Ah capacity cell when monitored through the app. For detailed instructions, refer to the manual provided by the manufacturer.

### 3.7. Lights

#### 3.7.1. The enhanced lighting system option offers:

- ✓ The HQ series trailer features LED lighting throughout the unit. The main light control is located on the interior control panel.
- ✓ A toggle rocker switch is used to operate the exterior, interior, and sleep lights.



- ✓ The sleep light is a 2-way switch and can be operated from the control panel or the shelf located in the sleeping area.
- ✓ The shower box also features an LED light that is activated left of the light.

## 4. PROPANE SYSTEM:

### 4.1. Importance And Use

Propane systems in trailers offer several key advantages. They provide efficient and portable energy for cooking, and heating. Propane's clean-burning nature reduces emissions, promoting eco-friendliness. Moreover, it is cost-effective and versatile, powering many appliances. Propane systems ensure reliability, even during power outages, enhancing safety and providing energy independence for trailer owners.



### 4.2. Location of Propane System

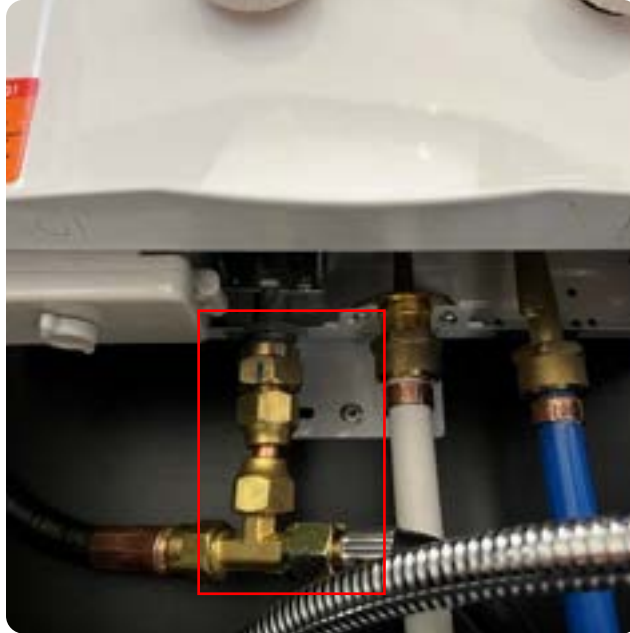
The primary included propane tank is located on the front of the shower box. This is the primary tank that feeds the hot water on-demand unit and the stove.



**Note:** Gas should be turned off when travelling or sleeping in your unit.



The optional second onboard propane tank is usually installed on the front box on the driver's side. Please speak to your rep for more information.



**Note:** Check regularly for leak, this can be done with soapy water. Due to the rugged use of the trailers in off road conditions. Vibrations can cause loosening of connections.

### 4.3. Safety Guidelines

- ✓ Avoid disconnecting or removing any tank when the valve is open.
- ✓ Keep gasoline or any flammable liquid away from propane appliances.
- ✓ Close propane tanks when travelling; do not leave them open.
- ✓ Refrain from filling tanks with natural gas; it's unsafe.
- ✓ Take tanks out of the camper before filling them.
- ✓ Do not fill tanks beyond 80% capacity.
- ✓ Always conduct a thorough trailer inspection for propane leaks and ventilate as needed.

### 4.4. If You Detect A Gas/propane Odor Or If The Detector Alarms

- ✓ Avoid touching electrical switches.
- ✓ Immediately extinguish any open flames.
- ✓ Open windows for ventilation.
- ✓ Turn off the propane supply at the tank(s).
- ✓ Have your system inspected by a certified LP gas technician. If your trailer and mattress are new, keep side doors/windows open to ventilate the unit effectively.

## 5. SHOWER BOX:

**Shower Location:** The external Hot water shower box is located at the front on the driver's side of the trailer.

### 5.1. Operation

It can be operated by following the steps below:

1. Open the shower box door.
2. Turn on propane.
3. Adjust water temperature as needed.
4. Turn on **"pump"** switch on main control panel.
5. Turn the ON/OFF switch on the shower head to the on position.
6. Adjust flow of the water volume on the hot water on demand unit.

**Note:** If you do not see the burner on the hot water unit is lit. Check if your batteries located in the bottom left corner are new. Or replace if needed. (D size batteries)

## 6. KITCHEN LAYOUT:

**Counter Space:** Limited area for food preparation.

**Sink and Faucet:** Small sink for washing.

**Cooking Area:** Stove or cooktop provided.

**Storage:** Cabinets for utensils and food.

**Refrigerator:** Compact fridge for storage.

**Windows:** Natural light and ventilation.

**Lighting:** Overhead lights for visibility.

**Outlets:** Electric sockets for appliances.





## 7. WINTERIZING:

Ensuring your Tactical Overland Trailer is prepared to prevent cold weather damage. Taking these precautions will make your trailer prepared for next year's use with minimal effort. The heat exchanger of the hot water heater is especially susceptible to freezing.

1. Empty the fresh water tank, open the drain valve located behind the access hatch on the rear of the water tank cradle.
2. Turn off the hot water on demand, by removing the batteries.



3. Drain the water heater and open the pressure relief valve to assist in draining. This is the brass tube located to the right of the middle of the unit. Leave this out over the winter.



4. Remove the shower hose from the pex connection.
5. Use an air compressor to blow out any remaining water from the water lines. You can blow the air from 2 points of access. The relief valve on the hot water on demand unit, or the shower hose connection port.

**Note:** Move the faucets (both hot and cold) positions as well while blowing air. Do this until only air is passing through the faucet.

6. If applicable, disconnect the battery and store it in a cool, dry place. Charge it periodically to maintain its charge.
7. Remove all perishable items from the refrigerator and clean it thoroughly. Prop the refrigerator doors open slightly to allow air circulation and prevent mold growth.
8. Remove any valuable items or items that could be damaged by extreme temperatures.
9. Ensure there is proper ventilation in the stored vehicle to prevent stale air and mildew. You can use vent covers to allow for ventilation while keeping rain and snow out.
10. Cover the vehicle with a specialized cover or tarp designed for winter storage. This cover will protect it from snow, ice, and harsh weather conditions.

**Note:** Check monthly if any water is collecting in your unit, and the mattress is dry.

## 7.1. De-Winterizing

To reverse the winterizing process, follow the de-winterizing procedure, following the steps below;

1. Close the main drain valve on the water tank, and replace access hatch.
2. Replace the relief valve on the hot water on demand unit and the shower hose/head.
3. Fill the water tank about 1/3 full to flush the tank.
4. Pull out the kitchen and turn the faucet to the off position.
5. Turn on the pump and prime your water lines. Once the pump shuts off automatically the lines are primed.
  - a. Turn the faucet to the cold and hot positions and run water through your lines for 1-2 min.
  - b. Turn the shower head to the ON position and run for 1-2 min.
6. Lift cushions and mattresses slightly to allow air circulation beneath them.
7. Close all windows and vents securely.
8. It's advisable to cover the trailer with a specialized trailer cover to protect it from ice formation. Avoid using tarps or materials that trap moisture, as it may accumulate under the cover.
9. Regularly inspect the unit for snow buildup and remove excessive amounts as needed.

## 8. GENERAL MAINTENANCE / (SHOW THE LOCATIONS TO GREASE, AND CHECK FOR WEATHERING):

### 8.1. Interior Care Suggestions

- ✓ Every Tactical Overland Trailer is designed to be compatible with mild cleaning agents, allowing you to maintain each unit's appearance and quality effectively.
- ✓ The cushions used in the manufacturing process are foam-backed and can be professionally cleaned, ensuring lasting cleanliness. The interior cushions are removable from the liner. The liner can be washed and hang-dried.
- ✓ Following these tips will not only prolong your Tactical Overland Trailer's lifespan but also enhance its resale value.

### 8.2. Exterior Maintenance Recommendations

- ✓ Regularly wash the unit with mild soap and water. Although the trailer wraps are durable, they might weather over time and could develop scratches, which won't impact the trailer walls' performance.
- ✓ Check the roof sealant and silicone annually, reapplying if any cracks or peeling are observed.
- ✓ Prior to cleaning, rinse windows thoroughly to remove dirt. Always lock window latches securely before travelling.  
**Note:** Hand washing is the preferred cleaning method, pressure washing can be utilized under specific conditions:
- ✓ Ensure water pressure remains below 2000 psi (14 MPa).
- ✓ Keep water temperature below 180 °F (80 °C).
- ✓ Use a spray nozzle with a 40-degree wide-angle spray pattern. Maintain a distance of at least 1 foot (300 mm) and spray perpendicular (at 90 degrees) to the graphic.

## 9. WARRANTY:

Subject to the terms and conditions set forth herein, Tactical Overland Trailer Inc O/A TACTICAL OVERLAND (hereinafter referred to as the **"Manufacturer"**, **"TACTICAL OVERLAND"**), warrants as follows with respect to the recreational trailer to which this Owner's Manual has been provided with (the **"Trailer"**):

1. The Trailer Components will, for a period of twelve (12) months following the Owner's purchase of the Trailer from either the Manufacturer or (b) a Dealer (the **"Component Warranty Period"**), be free from defects in material or workmanship and will conform to all written specifications provided by the Manufacturer; and
2. The Tubular Trailer Frame Chassis only will, for a period of twenty-four (24) months following the Owner's purchase of the Trailer from either (a) the Manufacturer or (b) a Dealer (the **"Frame Warranty Period"**), be free from defects in material or workmanship and will conform to all written specifications provided by the Manufacturer. (the above warranty referred to herein as the **"Warranty"**).

### 9.1. Terms and Conditions of Warranty

1. The Warranty becomes effective only if the online warranty registration is fully completed and submitted to the manufacturer within (30) days of the date of purchase by the Owner. The warranty registration is located on the Manufacturer's website (<http://www.tacticaloverland.ca>). The Manufacturer will confirm Warranty registration.
2. The Warranty is the only warranty on the part of the Manufacturer and there is no other representations or warranties, express or implied, other than as expressly set forth or referred to herein and, without limiting the generality of the foregoing, the Manufacturer does not make any warranties to the owner or to any other person or entity, whether express, implied or statutory, as to the description, quality, merchantability, completeness or fitness for any purpose of the Trailer or information provided hereunder or described herein, or as to any other matter all of which warranties are hereby excluded and specifically disclaimed.
3. The Warranty does not apply to any Non-Warranty Components. The Manufacturer is not the manufacturer of the following products: ranges, ovens, range hoods, refrigerators, furnaces, air conditioners, water pumps, heater/water heater, windows, jacks, electrical components, and LPG (liquid propane gas) accessories. The Manufacturer has not conducted any independent tests for Non- Warranty Component's quality and fitness and makes no expressed or implied representation or warranty regarding their freedom from defects.
4. If any defects in material or workmanship are discovered during the applicable Warranty Period, the Manufacturer will, at its sole discretion, repair or replace the defective component.
5. Any defects must be brought to the authorized selling dealer from whom the Trailer was purchased, or to the Manufacturer no later than ten (10) days after the discovery of such.

6. The Warranty is effective only for the applicable Warranty Period and only in respect of any defects reported to the manufacturer discovered during the applicable Warranty Period. The Warranty does not apply to the cost of transporting materials or units to or from the repair site.
7. The Warranty applies only to new Trailers operated in the ordinary course and in accordance with the Manufacturer's specifications and guidelines (as may be modified or amended from time to time).
8. **The Warranty will be void and of no effect if;**
  - a. Any after-market modifications are made to the Trailer.
  - b. Any repairs are made to the Trailer using non-authorized parts.
  - c. The owner fails to maintain the Trailer in a reasonable manner. or
  - d. In the opinion of the manufacturer, damage has occurred because of misuse, acts of God, negligence, or other causes beyond control of the Manufacturer.
9. **As used herein, the following terms have the meanings given thereto:**
  - a. **"Dealer"** means an authorized dealer of the Manufacturer's trailers or products.
  - b. **"Non-Warranty Components"** means any part, product or component included with or affixed to the Trailer which is (i) consumables, (ii) are not manufactured by the Manufacturer, or (iii) are covered by separate warranties of the individual manufacturer of such component (including but not limited to windows, tires, batteries, ranges, ovens, range hoods, refrigerator, furnace, heater/water heater, jacks, electrical components, and LPG (liquid propane gas) accessories.
  - c. **"Owner"** means the original purchaser of the Trailer from the Manufacturer or a Dealer and excludes any person who has purchased the Trailer from a person other than the Manufacturer or a Dealer.
  - d. **"Trailer Components"** means any part, product or component of the Trailer excluding the Trailer Frame and the Non- Warranty Components.
  - e. **"Tubular Trailer Frame Chassis"** means the lower chassis frame of the Trailer, excluding any Non-Warranty Components.
  - f. **"Warranty Period"** means either the Component Warranty Period or the Frame Warranty Period, as applicable.

The Warranty is in substitution for and eliminates all other liabilities of any kind whether arising under statute, in tort, by implication of law or otherwise, including, to the full extent as may be allowed by law, liability for any other representations respecting the Trailer, statutory warranties or implied warranties or conditions as to the Trailer's merchantability or fitness. The Manufacturer's sole liability for a breach of the Warranty, and the Owner's sole remedy, shall be the repair or replacement of the defective component, as applicable. Under no circumstances shall the Manufacturer be accountable to any person for loss or damage to the Trailer or its parts, loss of time, inconvenience, business loss, consequential or other damages or any other claims associated to or amounting to any defect in. Factory materials or workmanship whenever found except as provided for herein.

## 9.2. What Is Not Covered – This Warranty Shall Not Apply To

- ✓ Routine maintenance including, without limitation, caulking, re-caulking and waxing of the body of the trailer, tightening screws, brake squeak/lock-up/adjustment, latches, locks, combustion systems, changing fuses and maintaining the HVAC systems;
- ✓ Adjustments to all doors, drawers, locks, latches, awnings and window treatments beyond 90 days after retail sale.
- ✓ Equipment, products, components, appliances, or accessories not manufactured by Tactical Overland;
- ✓ Recreational vehicles used for business, rental, commercial, residential, or disaster relief purposes, or any purposes other than recreational travel and family camping;
- ✓ Recreational vehicles which are not originally purchased through Tactical Overland or those purchased through auction, repossession, salvage or an otherwise damaged or distressed condition;
- ✓ Damage or loss caused in whole or in part by the misuse, abuse, neglect, theft, vandalism, product modification, improper customer or dealer installation, improper stowing of equipment, overloading or improper balancing of the load, low or high voltage, unauthorized repair or failure to follow instructions supplied with the recreational vehicle;
- ✓ Damage or loss caused in whole or in part by the unauthorized attachments, modifications or alterations to the structure, body, 7 pin box, or frame of the RV including but not limited to trailer hitches for towing;  
Any fading or die lot changes of upholstery;
- ✓ Design defects; Redesign/Re-construction of any part of the RV; or anything related to wheel or axle alignment;
- ✓ Rust or corrosion due to the environment; and any broken glass damage;
- ✓ Damage or loss caused in whole or in part by animals, exposure to natural or atmospheric elements, corrosive chemicals, ash or fumes generated or released by vehicles, collision, road hazards, rock chips, condensation, or any other source;
- ✓ Damage or loss caused in whole or in part by the willful or negligent acts of the driver of the vehicle pulling the RV, an accident involving the RV, or the condition of any road surface;
- ✓ Damage or loss to the RV caused in whole or in part by the tow vehicle selected by the owner, owner's operation or use of the tow vehicle, improper selection or installation of towing hitch on the tow vehicle, weight distribution, sway control or equalizer equipment, or damage to the owner's tow vehicle;
- ✓ Any injury, loss or damage due to mould or fungi; and
- ✓ Any RV licensed, registered, or primarily used outside Canada or the USA.
- ✓ The Tactical Overland warranty period is valid from the date of purchase by the first retail owner and is not transferrable.

## 9.3. How To Obtain Warranty Service

All warranty claims must be made within the warranty period. All warranty claims must be submitted on Tactical Overland's website on the 'Warranty Claim' page.

Tactical Overland Trailer Inc. O/A TACTICAL OVERLAND reserves the right to change any components used in production at their discretion.



Item (if Equipped)	Interval	Maintenance
Coupler	Each use	Inspect, Clean and Grease.
Safety Chains	Each use	Inspect.
Wheels and tires	Weekly	Check Fire Pressure.
	3 Months or 5000km/3000miles	Inspect for wear/damage.
	50 and 100kms (30 and 60 miles)	Check lug nut torque. If when reinstalled wheel reinspects torque at 50 and 100 km.
	3 months or 5000km/3000miles	Check lug nut torque.
	Each use	Inspect, Clean and Grease.
Brakes	Each Use	Test Trailer brakes for proper operation.
	Each Use	Test the Breakaway system switch and check the battery charge.
	50 and 100kms (30 and 60 miles)	Check lug nut torque. If when reinstalled wheel reinspects torque at 50 and 100 km.
	3 months or 5000 km/3000miles	Brake adjustment (manually adjusted brakes).
	6 months or 10000 km/6000miles	Inspect brake magnets and check current draw.
	12 months or 20000 km/12000miles	Inspect brake drum, brake linings and brake wirings.
Wheel Bearings	Once at 4 months then every 12 months	Inspect for bearing play flash, check seals for leaks, repack/replace are required.
Suspension	Within first week of use	Check torque of all suspension nut and bolts.
	Once at 4 months then every 12 months	Inspect all suspension components for damage and cracks.
	Once at 4 months then every 12 months	Check wheel alignment
	Once at 4 months then every 12 months	Check torque of all suspension nut and bolts.
	12 months or 20000 km/12000miles	Grease suspension bushings
	12 months or 20000 km/12000miles	Inspect brake drum, brake linings and brake wirings.

Frame	Each Use	Check for damages and cracks. Check fasteners for brightness.
	6 months	Wax Tongue jack, grease as required.
Locks and Hinges	12 months	Lubricate/Adjust
Window and Door seats	12 months	Inspect repair/replace are required
Sealant	12 months	Inspect repair/replace are required
Water heater	6 months	Descale
	Months	Clean inlet air and water filter.
	12 months	Inspect burner, top exhaust, water system and gas system
Trailer heater/AC	12 months	Gas system and combustion system inspection.
Stove	12 months	Inspect hoses and connections and inspect for leaks.
Gas System	Each Use	Inspect gas bottle connections for leaks.
	12 months	Inspect hoses and connections and inspect for leaks.
Fire Extinguisher	Each Use	Inspect, replace or service if required.
Smoke Detector	12 months	Test for proper function, replace if expired.
CO Detector	12 months	Test for proper function, replace if expired.
Smoke Detector	12 months	Test for proper function, replace if expired.
Gas Detector	12 months	Test for proper function, replace if expired.
Leak Check	12 months	All wiring, liquid propane, plumbing fittings for leaks, wear and tear.

